

TROMTRAK 1250

Drum unwinder, manual

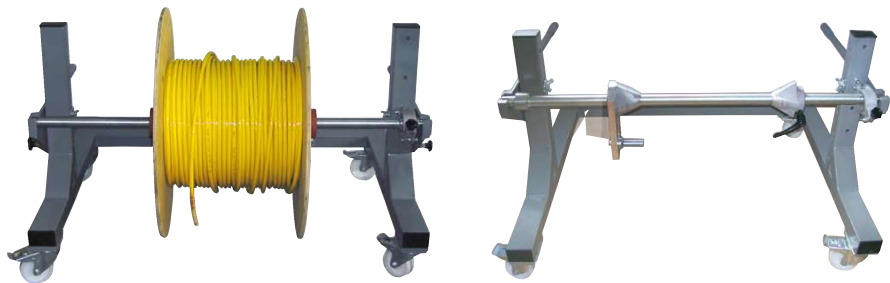


Fig. 1 TROMTRAK 1250 with drum sample incl. axes with centering cones

Fig. 2 TROMTRAK 1250 incl. adjustable driving pin

TROMTRAK 1250

- Manual drum unwinder with adjustable brake

Functionality:

The manual drum unwinders enables to unwind the drums easy and twisting-free at the place of processing. This unwinder is qualified for drums made from wood, steel and plastics and a perfect addition to a Kabelmat cutting automat.

- Suitable for usage in a mechanical processing line
- Base frame with brakeable driving wheels
- Drum axle with adjustable shoe brake
- Double bearing axle
- Stabil steel welded construction

Technical data	TROMTRAK 1250 with centering cones	TROMTRAK 1250 with driving pin Ø 25mm	TROMTRAK 1250 with driving pin Ø28 mm
Part No.	85100011	85100581	85100582
Drum-Ø	630 - 1250 mm	630 - 1250 mm	630 - 1250 mm
Drum axle-Ø	34 mm	34 mm	60 mm
Load capacity	max. 250 kg	max. 250 kg	max. 500 kg
Drum width	max. 890 mm	max. 730 mm (at bore 40 mm)	max. 880 mm (at bore 80 mm)
	-	max. 810 mm (at bore 80 mm)	-
L x W x H	approx. 860 x 1300 x 720 mm	approx. 860 x 1300 x 720 mm	approx. 860 x 1300 x 720 mm
Colour	RAL 7005 mouse grey	RAL 7005 mouse grey	RAL 7005 mouse grey
Weight	approx. 50 kg	approx. 50 kg	approx. 60 kg
Adjustment range driving pin	-	80 - 170 mm	100 - 300 mm

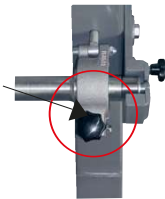


Fig. 3 Shoe brake

Indoor use only.
Fig. may differ from original.
Technical modifications reserved.



TROMCAR 1000 / 1250

Unwinder and transport device for drums, manual



Fig. 1 TROMCAR 1000

Fig. 2 TROMCAR 1250

TROMCAR 1000 / 1250

- Manual unwinder and transport device for drums

Functionality:

These especially robust manual unwinding and transport systems are used for the in-house transport; they can be used to transport drums and unwind them at the processing site.

- Flexible usage
- Large heavy-duty rollers
- All steel welded construction
- Optional measuring device possible

Technical data	TROMCAR 1000	TROMCAR 1250
Part No.	85006002	85006003
Drum-Ø	500 - 1000 mm	500 - 1250 mm
Drum axle with centering cones	no. 1 Ø 34 x 840 mm	no. 2 Ø 34 x 1140 mm
Load capacity	max. 1000 kg	max. 700 kg
Drum width	max. 710 mm	max. 1000 mm
L x W x H	approx. 1600 x 1040 x 770 mm	approx. 1600 x 1360 x 830 mm
Colour	RAL 7005 mouse grey	RAL 7005 mouse grey
Weight	approx. 50 kg	approx. 52 kg
Equipment	2 fixed rollers 2 pillars	2 fixed rollers 1 steering roller
Equipment		
Part No.	Description	
85101001*	Inlet and outlet roller cage unit with fixing device for MESSBOI 25	
85101000	MESSBOI 25 length measuring device for measuring range 2 - 25 mm	
86101000	MESSBOI 25 length measuring device conformity assessed for measuring range 2 - 15 mm	

*Note: In combination with TROMCAR 1000 / 1250 the inlet and outlet roller cage unit is necessary.



Abb. 3: MESSBOI 25 with roller cage unit and mounting device

Indoor use only.
Fig. may differ from original.
Technical modifications reserved.



MATBOI

Storage and unwinding system for coils, tubes and plastic pipes

Time-saving storage and unwinding of coils, tubes and plastic pipes

Do you want to store coils and spools?
No problem - A combination is possible.

» Find more information at SPULBOI storage system



Fig. 1: MATBOI / SPULBOI Combination

MATBOI

Storage and unwinding system for coils, tubes and plastic pipes

Fuctionality:

This storing system is mainly used in workshop or production areas. It allows clearly ordered storing and entangling-free pulling-off according to demand. The mobile version or stationary version as wall rack offers a large variety of applications. Twisting-free material unwinding, simultaneous measuring and cutting-to-length of winding material such as cables, tubes or profiles wound on commercial coils are possible. The coils are stored clearly and are ready for unwinding.

Our unwinding and storage plates for larger coils can be slid sideways via swivel arms. This ensures easy storage and removal of the coils. A central adjustment of the clamping bolts assured a simple and continuous tension of the coils.

An additional bouncing protection consisting of border bolts and cover plate avoids against bouncing of single winding layers.

The unwinding plates are made of winding-friendly surfaces and are equipped with a brake to prevent the material for avoiding an unconditional material flow during unwinding process.

- Mobile storage device
- Length measurement possible
- Easy assembly and removal of the coils (coils are stored separately)

Complete device



Fig. 2: MATBOI complete device

Complete device	MATBOI
Part No.	85100670
Components	consisting of:
1 pcs. storage rack	85101500
2 pcs. MATBOI 450 T	85100159
3 pcs. MATBOI 300 T	85100157
1 pcs. MATBOI 200 T	85100155
Technical data	
H x W x D	approx. 1780 x 1040 x 700 mm
Colour	RAL 7005 mouse grey
Weight	approx. 100 kg

MATBOI

Storage and unwinding system for coils, tubes and plastic pipes

Storage rack / Wall profile rail



Fig. 3: Storage rack 650

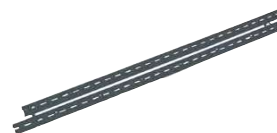


Fig. 4: Wall profile rail

Coil storing units - horizontal



Fig. 5: MATBOI 200 T



Fig. 6: MATBOI 300 T

Technical data	Storage rack 650 mobile
Part No.	85101500
H x W x D	approx. 1780 x 1040 x 700 mm
Loading capacity	max. 200 kg
Weight	approx. 42 kg
Colour	RAL 7005 mouse grey
Incl. 4 brakeable rollers.	

Technical data	Attachment piece for storage rack
Part No.	86181001
H x W x D	approx. 60 x 30 x 315 mm

Complete unit incl. clamping rail and screws to extend storage rack about 300 mm.
Note: Not suitable for MATBOI 480 T and MATBOI 650 T unit!

Technical data	Wall profile rail (pair)
Part No.	85100201
H x W x D	approx. 980 x 30 x 13 mm
Weight	approx. 1 kg
Colour	RAL 7005 mouse grey

For mounting SPULBOI and MATBOI units.
Note: Not suitable for MATBOI 480 T and MATBOI 650 T unit!

Technical data	MATBOI 200 T
Part No.	85100155
Plate Ø	200 mm
Coil Ø	max. 190 mm
Height centering pins	110 mm
Core adjusting range	80 - 150 mm
Coil weight	max. 8 kg
Weight	approx. 8,6 kg
Colour plate / base	RAL 7035 light grey, RAL 7005 mouse grey
With a brake fitted on the shelf, allowing the mounting of MESSBOI 10 H	

Technical data	MATBOI 300 T
Part No.	85100157
Plate Ø	300 mm
Coil Ø	max. 290 mm
Height centering pins	110 mm
Core adjusting range	90 - 180 mm
Coil weight	max. 10 kg
Weight	approx. 9,2 kg
Colour plate / base	RAL 7035 light grey, RAL 7005 mouse grey
With a brake fitted on the shelf, allowing the mounting of MESSBOI 10 H	

MATBOI

Storage and unwindig system for coils, tubes and plastic pipes

Coil storing units - horizontal



Fig. 7: MATBOI 450 T

Technical data	MATBOI 450 T
Part No.	85100159
Plate Ø	450 mm
Coil Ø	max. 440 mm
Height centering pins	110 mm
Core adjusting range	150 - 250 mm
Coil weight	max. 12 kg
Weight	approx. 10,2 Kg
Colour plate / base	RAL 7035 light grey, RAL 7005 mouse grey
With a brake fitted on the shelf, allowing the mounting of MESSBOI 10 H.	

Length measuring devices



Fig. 8: MESSBOI 10 H

Technical data	MESSBOI 10 H
Part No.	85100203
Measuring range	1 - 15 mm
Measuring force	spring pressure
L x W x H	approx. 260 x 110 x 140 mm
Display of counter	9999,99 m
Error limit	+ / - 2 %
Colour	black / white
With holder to attach to the unwind unit.	



Abb. 9: MESSBOI 25

Technical data	MESSBOI 25*
Part No.	85101000
Measuring range	2 - 25 mm
Measuring force	spring pressure
L x W x H	approx. 120 x 160 x 350 mm
Display of counter	9999,99 m
Error limit	+ / - 0,5 %
Colour	aluminum / silver
Weight	approx. 1,4 kg

*MESSBOI 25: Available with conformity assessment (formerly first calibration).

Accessories



Abb. 10: Holder for MESSBOI 25 at MATBOI storage rack

Technical data	Holder for MESSBOI 25 at MATBOI storage rack
Part No.	85101002
Colour	RAL 7005 mouse grey

MATBOI

Storage and unwindig system for coils, tubes and plastic pipes

Coil storing units- horizontal



Fig. 11: MATBOI 450 T



Fig. 12: MATBOI 650 T right

Bouncing protection

- Border pins and cover plate to avoid the bounce of the coil (e.g. for tubes and plastic pipes)

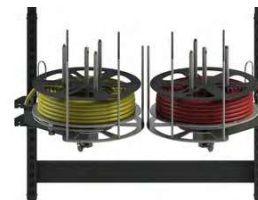


Fig. 13: MATBOI 480 T left / 480 T right with bouncing protection both sides



Fig. 14: MATBOI 650 T right with bouncing protection

Technical data	MATBOI 480 T left	MATBOI 480 T right
Part No.	85101502	85101503
Type of swivel arm	left	right
Plate-Ø	480 mm	480 mm
Coil-Ø	max. 470 mm	max. 470 mm
Height centering pins	250 mm	250 mm
Core adjusting range	140 - 320 mm	140 - 320 mm
Coil weight	max. 20 kg	max. 20 kg
Colour plate / swivel arm	RAL 7005 mouse grey / zinc plated	RAL 7005 mouse grey / zinc plated
Storing unit for bigger coils mounted on swivel arm incl. brake infinitely adjustable clamping bolts.		

Technical data	MATBOI 650 T left	MATBOI 650 T right
Part No.	85101505	85101506
Type of swivel arm	left	right
Plate-Ø	650 mm	650 mm
Coil-Ø	max. 640 mm	max. 640 mm
Height centering pins	250 mm	250 mm
Core adjusting range	180 - 500 mm	180 - 500 mm
Coil weight	max. 20 kg	max. 20 kg
Colour plate / swivel arm	RAL 7005 mouse grey / zinc plated	RAL 7005 mouse grey / zinc plated
Storing unit for bigger coils mounted on swivel arm incl. brake infinitely adjustable clamping bolts.		

Technical data	Bouncing protection for MATBOI 480 T
Part No.	85101504
Cover plate Ø	max. 480 mm
Incl. 5 border pins	✓
Height border pins	305 mm
Coil height	max. 230 mm
Total weight	approx. 7,3 kg
Weight cover plate	approx. 2,7 kg
Colour cover plate	RAL 7005 mouse grey
Colour border pins	galvanised

Technical data	Bouncing protection for MATBOI 650 T
Part No.	85101507
Cover plate Ø	max. 650 mm
Incl. 5 border pins	✓
Height border pins	305 mm
Coil height	max. 230 mm
Total weight	approx. 10 kg
Weight cover plate	approx. 3,8 kg
Colour cover plate	RAL 7005 mouse grey
Colour border pins	galvanised

SPULBOI

Storage system for spools

Time-saving storage and unwinding of spools

Do you want to store spools and coils?
No Problem - A combination is possible.

» Find more information at MATBOI storage system



Fig. 1 SPULBOI complete device

SPULBOI

Storage rack and unwinding system for spools

Functionality:

The SPULBOI storing system is mainly used in work shops, shops or production areas. It allows clearly ordered storing, twisting-free material unwind from the spools and cutting-to-length according to demand. The special advantage of some of these racks is the individual storing of each spool which allows quick and comfortable exchange of the single spools. Due to the individual suspension each spool is slightly braked and the spool stops immediately upon material payout in order to avoid uncontrolled reeling-off after dispensing.

- Variable equipping possibilities
- Space-saving system
- Mobile storage device
- Length measurement possible
- Easy assembly and removal of the spools (spools are stored separately)
- Possible combinations with MATBOI storage rack for coils

Complete device



Fig. 2 SPULBOI complete device

Complete device	SPULBOI
Part No.	85100680
consisting of:	
1 pc storage rack 650 mobile	85101500
1 pc SPULBOI 300-3-S	86003011
1 pc SPULBOI 310-7-S	85100568
1 pc SPULBOI 310-5-S	86003099
1 pc SPULBOI 200-7-S	85100559
1 pc cable guiding rail	85100552
1 pc MESSBOI 10 LS	85100441
Technical data	
H x W x D	approx. 1780 x 1040 x 700 mm
Colour	RAL 7005 mouse grey
Weight	approx. 100 kg



SPULBOI

Storage system for spools

Storage rack / Wall profile rail



Fig. 3 storage rack 650



Fig. 4 Wall profile rail

Spool storing units - horizontal



Fig. 5 SPULBOI 200-4-S



Fig. 6 SPULBOI 300-3-S



Fig. 7 SPULBOI 450-2-S

Technical data	Storage rack 650 mobile	Attachment piece for storage rack
Part No.	85101500	86181001
H x W x D	approx. 1780 x 1040 x 700 mm	approx. 60 x 30 x 13 mm
Loading capacity	max. 200 kg	
Weight	approx. 46 kg	Complete unit incl. clamping rail and screws to extend storage rack about 300 mm
Colour	RAL 7005 mouse grey	
Mobile	incl. 4 breakable rollers	

Technical data	Wall profile rail (pair)
Part No.	85100201
H x W x T	approx. 980 x 30 x 13 mm
Weight	approx. 1 kg
Colour	RAL 7005 mouse grey
For mounting spool and coil storing units	

Technical data	SPULBOI 200-4-S
Part No.	86003004
Bearing	4 single mounted plates
Plate Ø	200 mm
Spulen-Ø	max. 190 mm
Axle-Ø	16 x 200 mm
Centering cone for bore Ø	25 - 80 mm
Spool weight	max. 8 kg
Colour plate / base	RAL 7035 light grey, RAL 7005 mouse grey
With overrun brake and fixture for MESSBOI 10 H mounted on shelf	

Technical data	SPULBOI 300-3-S
Part No.	86003011
Bearing	3 single mounted plates
Plate Ø	300 mm
Spool Ø	max. 290 mm
Axle-Ø	16 x 200 mm
Centering cone for bore Ø	25 - 80 mm
Spool weight	max. 8 kg
Colour plate / base	RAL 7035 light grey, RAL 7005 mouse grey
With overrun brake mounted on the shelf and slot-in storage box for MESSBOI 10 H	

Technical data	SPULBOI 450-2-S
Part No.	86003010
Bearing	2 single mounted plates
Plate Ø	450 mm
Spool Ø	max. 440 mm
Axle-Ø	16 x 200 mm
Centering cone for bore Ø	25 - 80 mm
Spool weight	max. 8 kg
Colour plate / base	RAL 7035 light grey, RAL 7005 mouse grey
With overrun brake mounted on the shelf and slot-in storage box for MESSBOI 10 H	



SPULBOI

Storage system for spools

Spool storing units- vertical



Fig. 8 SPULBOI 200-7-S



Fig. 9 SPULBOI 310-7-S



Fig. 10 SPULBOI 310-5-S



Fig. 11 SPULBOI 500-4-S

Technical data	SPULBOI 200-7-S
Part No.	85100559
Bearing	Patent holders for 7 single mounted spools
Spool Ø	150 - 200 mm
Spool width	75 - 80 mm
Spool bore	Ø 18,5 mm
Spool weight	max. 4 kg
Colour	RAL 7005 mouse grey

With patented axle-free spool holders. Spools (Part No. 85015850, 8501584) are suspended and removable individually.

Technical data	SPULBOI 310-7-S
Part No.	85100568
Bearing	Patent holders with 7 single mounted spools
Spool Ø	310 mm
Spool width	75 mm
Spool bore	Ø 18,5 mm
Spool weight	max. 5 kg
Colour	RAL 7005 mouse grey

With patented axle-free spool holders. Spools (Part No. 85100404) are suspended and removable individually and included in the scope of delivery.

Technical data	SPULBOI 310-3-S	SPULBOI 310-4-S	SPULBOI 310-5-S
Part No.	86004080	86003098	86003099
Bearing	3 individually stored axles	4 individually stored axles	5 individually stored axles
Spool-Ø	max. 310 mm	max. 310 mm	max. 310 mm
Spool width	max. 270 mm	max. 215 mm	max. 167 mm
Axle-Ø	10 mm	10 mm	10 mm
Spool weight	max. 20 kg	max. 15 kg	max. 10 kg
Total loading capacity	max. 50 kg	max. 50 kg	max. 50 kg
Colour	RAL 7005 mouse grey	RAL 7005 mouse grey	RAL 7005 mouse grey

Technical data	SPULBOI 500-4-S
Part No.	86103090
Bearing	4 individually stored axles
Spool-Ø	max. 500 mm
Spool width	max. 215 mm
Axle-Ø	10 mm
Spool weight	max. 8 kg
Total loading capacity	max. 30 kg
Colour	RAL 7005 mouse grey

SPULBOI

Storage system for spools

Empty spools



Fig. 12 Spool
Part No. 85015840



Fig. 13 Spool
Part No. 85100404

Cable guiding rail & Length measuring devices



Fig. 14 Cable guiding rail



Fig. 15 MESSBOI 10 LS

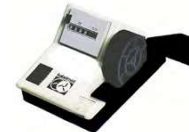


Fig. 16 MESSBOI 10 H

Spool storage rack - Table version

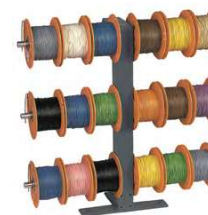


Fig. 16 SPULBOI 200

Technical data	Empty spool	Empty Spool	Empty Spool	Empty Spool
Part No.	85015850	85015840	85100404	85100406
Spool-Ø	150 mm	200 mm	310 mm	310 mm
Core-Ø	50 mm	50 mm	150 mm	150 mm
Spool width	80 mm	75 mm	75 mm	150 mm
Bore-Ø	18,5 mm	18,5 mm	30 mm	30 mm
Loading capacity	max. 4 kg	max. 4 kg	max. 5 kg	max. 5 kg
Colour	orange	black	black	black

Technical data	Cable guiding rail
Part No.	85100552
Equipped with 30 reverse-lock wire guides. The rail includes horizontal extension slides and can be mounted to rack or wall profile to centralize material dispensing. For spools up to Ø of 310 mm.	

Technical data	MESSBOI 10 LS	MESSBOI 10 H
Part No.	85100441	85100203
Material-Ø	1 - 15 mm	1 - 15 mm
Measuring force	Spring pressure	Spring pressure
L x W x H	approx. 260 x 110 x 140 mm	approx. 260 x 110 x 140 mm
Display of counter	9999,99 m	9999,99 m
Measuring accuracy*	+ / - 2 %	+ / - 2 %
Colour	black / white	black / white
Cable guiding track necessary	✓	-
Holder	With holder for mounting into cable guiding rail. Length measuring unit can be moved along the rail.	With holder to attach to the unwind unit.

Technical data	SPULBOI 200
Part No.	85001620
Amount of spools	max. 18
Spool-Ø	max. 200 mm
Spool width	max. 80 mm
Axle Ø	18 mm
Weight	approx. 5,5 kg
Material	steel
Useable axle length	6 x 260 mm
L x W x H	approx. 620 x 165 x 620 mm
Colour	RAL 7005 mouse grey

Empty spools are not included in the scope of delivery.

LAGBOI 2200 / 3000

Drum rack and unwinding system

Strong helper with various equipping possibilities



Fig. 1: LAGBOI 2200 M

LAGBOI 2200 / 3000

- Drum rack and unwinding system in stationary or mobile version

Functionality:

The **LAGBOI** consists of pre-assembled modules (frame and crossbars) and can be assembled to a solid, clearly ordered, space-saving and very useful rack and unwinding device. The system is only suitable for **manual unwinding**.

- Variable equipping possibilities
- High stability
- High surface protection (powder coated)
- Available in stationary or mobile version
- Travelling equipment / drawbar includes a gas pressure spring (compensated weight)



Fig. 2: LAGBOI 3000 S



LAGBOI 2200 / 3000

Drum rack and unwinding system

Base frame

Technical data	LAGBOI 3000 S	LAGBOI 2200 S	LAGBOI 3000 M	LAGBOI 2200 M
Part No.	85100934	85100935	85100936	85100937
H x W x D	3080 x 2000 x 980 mm	2170 x 2000 x 980 mm	3110 x 2000 x 1200 mm	2200 x 2000 x 1200 mm
Loading capacity	max. 3000 kg	max. 3000 kg	max. 2200 kg	max. 2200 kg
Weight	approx. 250 kg	approx. 200 kg	approx. 280 kg	approx. 230 kg
Colour	RAL 7005 mouse grey	RAL 7005 mouse grey	RAL 7005 mouse grey	RAL 7005 mouse grey
Travelling equipment with drawbar and 4 heavy-duty-wheels	X	X	✓	✓

Equipping possibilities depending on drum sizes (KTG design DIN 46391)

Equipping possibillityi depending on drum size	12 x Ø 400 mm drums 2 x 6 axles	8 x Ø 300 mm drums 2 x 4 axles	12 x Ø 400 mm drums 2 x 6 axles	8 x Ø 300 mm drums 2 x 4 axles
or	8 x Ø 600 mm drums 2 x 4 axles	6 x Ø 600 mm drums 2 x 3 axles	8 x Ø 600 mm drums 2 x 4 axles	6 x Ø 600 mm drums 2 x 3 axles
or	6 x Ø 800 mm drums 2 x 3 axles	4 x Ø 900 mm drums 2 x 2 axles	6 x Ø 800 mm drums 2 x 3 axles	4 x Ø 900 mm drums 2 x 2 axles
or	4 x Ø 1000 mm drums 2 x 2 axles		4 x Ø 1000 mm drums 2 x 2 axles	

Drum axle

Part No.	Description
85008010	Drum axle no. 1 Ø 34 x 840 mm incl. centering cones with locking screws

Recommended accessory:

- **TROMSTOP transport and loading accessory** to transport, store and remove drums in and out of a drum rack



Fig. 3: Drum axle incl. centering cones

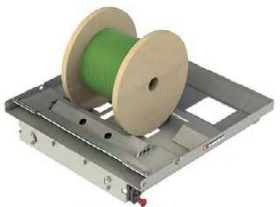


Fig. 4: TROMSTOP transport and loading accessory

Note: The device LAGBOI has to be assembled on site in accordance with the delivered manual. The assembly is not included in the supply.

Indoor use only.
Fig. may differ from original
Technical modifications reserved.



TROMSTOP

Transport and loading tool for highlift truck

For the transport with a lifting device



Fig. 1 TROMSTOP, example of use



Fig. 2 TROMSTOP, loading ramp fold out



Fig. 3 TROMSTOP with drum Ø800 mm (sample)

TROMSTOP

- Transport and loading tool for transporting drums via highlift truck

Functionality:

The tines of the lifting equipment are driven in beneath the placement platform. As soon as the tines have reached the end of the platform, a locking pin closes beneath the platform - the platform is thereby firmly secured. The drums to be transported can now be rolled on via fold-out loading ramps. Predefined centring mechanisms ensure stable mooring of the drums, which corresponds with the load centre of the lifting equipment. Once the drums have been rolled on, the width-adjustable loading ramps are folded in and transportation can begin.

- Time-saving and safe transport of drums
- Easy storage and removal of drums in and out of a drum storage
- Suitable for almost all lifting devices

Technical data	TROMSTOP
Part No.	87000313
Drum-Ø	400 - 1000 mm
Drum width	max. 710 mm
Drum weight	max. 900 kg
L x W x H	788 x 780 x 135 mm
Weight	approx. 45 kg
Material	zinc-plated
Lifting equipment requirements (fork tines)	
Fork tine format	open
Fork outside spacing	min. 540 - max. 580 mm
Fork tine height (lowered)	max. 85 mm
Fork tine length	approx. 1150 mm
Fork tine width	170 - 185 mm
Load center distance for drum-Ø 710 - 1000 mm (weight max. 900 kg)	approx. 600 mm
for drum-Ø 400 - 630 mm (weight max. 250 kg)	approx. 890 mm
Tine thickness at the fork tine tip	max. 35 mm
Sheet thickness at the fork tine tip	max. 6 mm

TROMPLAT 1000 / 2500

Transport and loading tool for forklift truck

For the transport with a forklift truck



Fig. 1 TROMPLAT 1000

TROMPLAT 1000 / 2500

- Transport and loading tool for transporting drums via forklift truck

Functionality:

This transport and loading accessory consists of two plat forms (extensions) which are put on the forks and fixed by safety bolt. By changing these accessories from the right to the left and vice versa they can either be used for small drums as well as for bigger ones. The drum is simply rolled away on the floor. To avoid that the drum falls out, it must rest in centering position. Perfect for forklifts with hydraulically adjustable forks.

- Time-saving and safe transport of drums
- Easy storage and removal of drums in and out of a drum storage
- CE marking

Technical data	TROMPLAT 1000	TROMPLAT 2500
Part No.	87000310	87000311
Length	depending on length of the fork tines	depending on length of the fork tines
Loading weight	max. 1000 kg	max. 2500 kg
Weight	60 kg / pair	150 kg / pair
Colour	RAL 7005 mouse grey	RAL 7005 mouse grey



Fig. 2 TROMPLAT 1000 example of storing the drum into a Kabelmat LAGROL rack



Fig. 3 TROMPLAT 1000 example of use